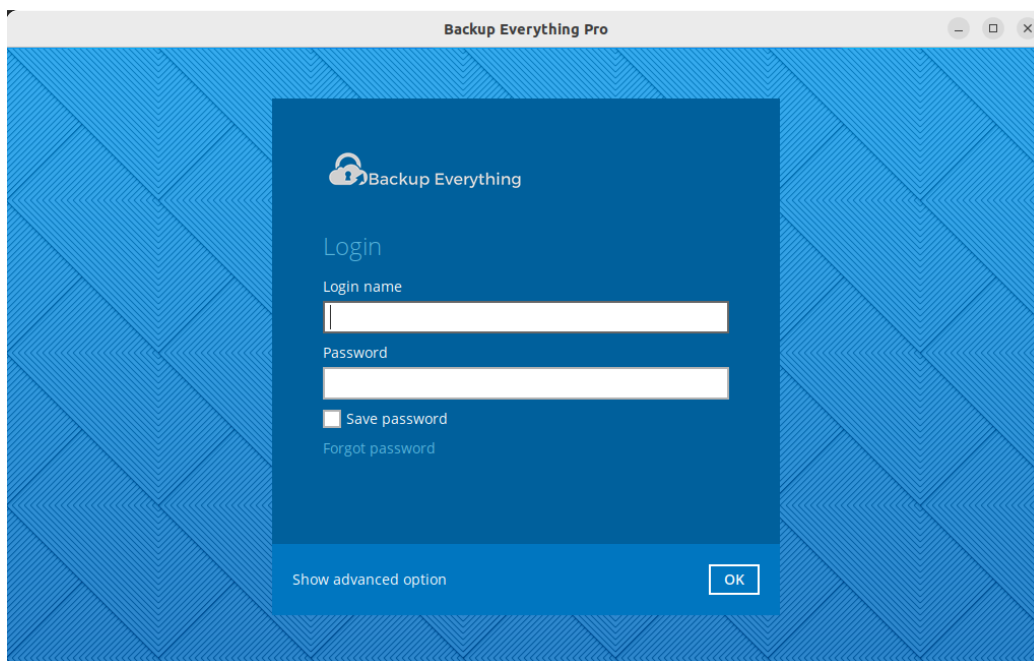


MS Windows System Backup Guide

Follow these steps to create and configure a system backup on a Windows machine.

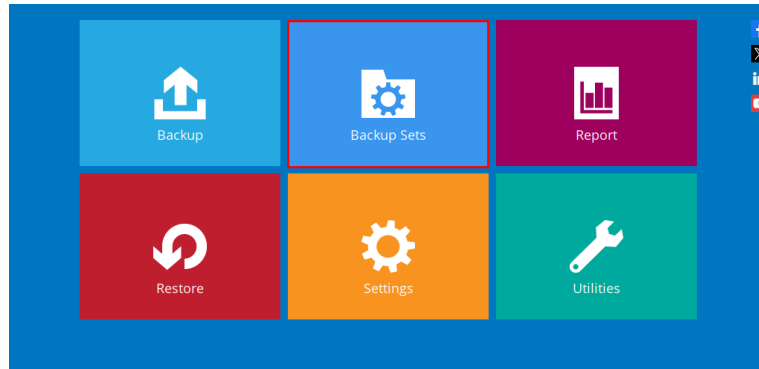
1. Launch the Program & Login

Enter your login credentials to access the main dashboard.



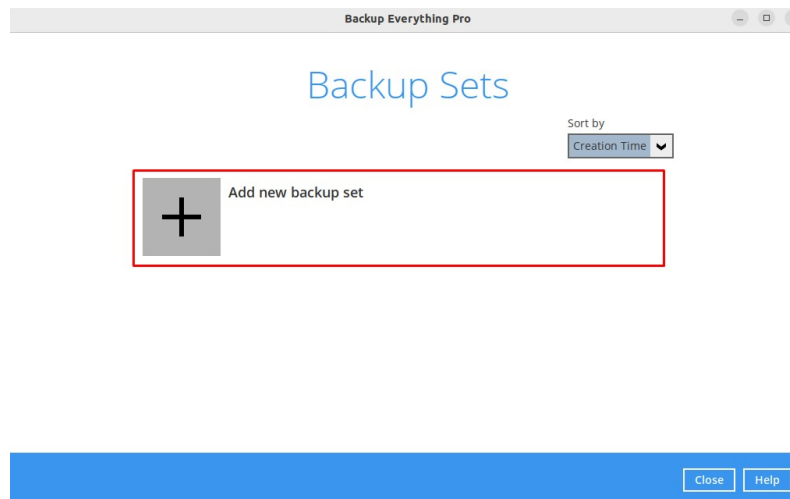
2. Go to the Backup Sets Menu

On the Middle, click on 'Backup Sets'.



3. Add New Backup Set

create a new backup set.



4. Configure Backup Set

The screenshot shows the 'Configure Backup Set' window in Windows. It has three main sections: 'Name' with a text box containing 'win disk backup'; 'Backup set type' with a dropdown menu showing 'MS Windows System Backup'; and 'Specify the temporary location for the system backup' with a dropdown menu showing 'Local Disk (C:)' selected. Red arrows point to each of these three sections.

Name the backup set (or leave the default name).

*Set Backup Type to: **MS Windows System Backup**.*

Choose a Temporary Location:

*- Make sure this location has at least **87 GB** of free space.*

System Requirements:

- You **must have at least two separate drives/partitions/disks** on the system:
 1. One to act as the **temporary location** (used during the backup process).
 2. Another to serve as the **backup source** (the drive/volume to be backed up).

Critical Rule:

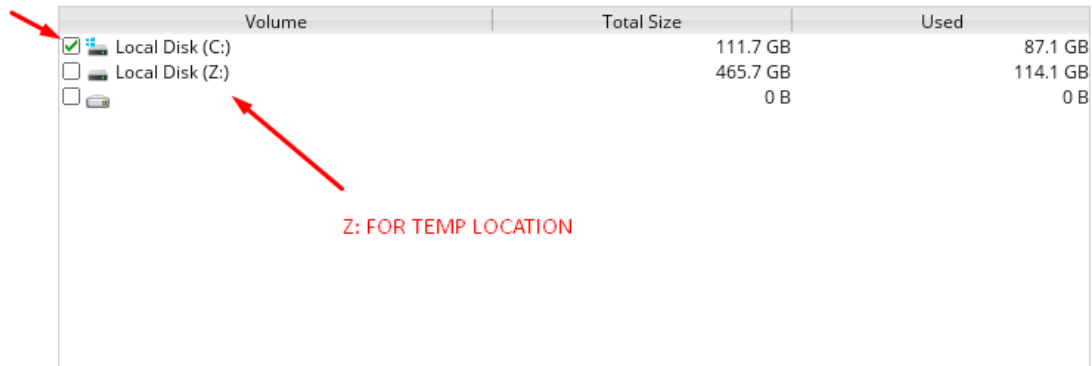
- The **temporary location cannot** be the same as the **backup source**.
 - For example, if you're backing up **C:**, you cannot use **C:** as your temporary location.
 - A separate volume like **D:** or **Z:** must be used for temp storage.

5. Select Backup Source

Choose the disk(s) or volume(s) you want to back up.

Example: C:

Z:\ Used for Temporary location

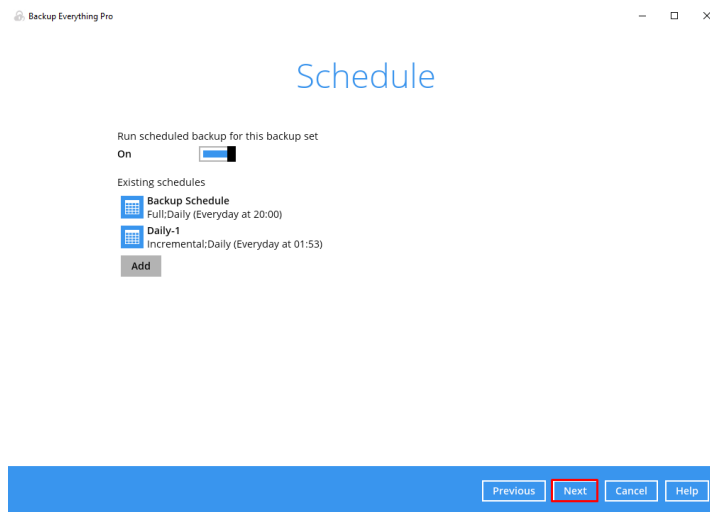
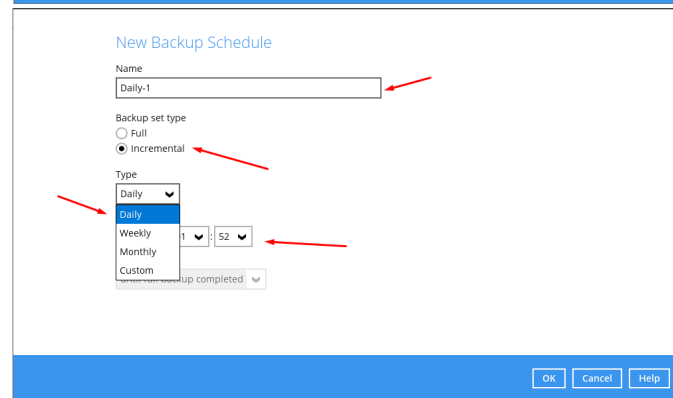
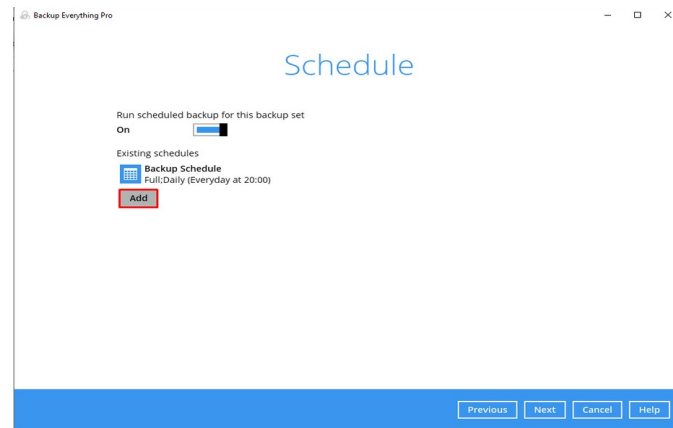


	Volume	Total Size	Used
<input checked="" type="checkbox"/>	Local Disk (C:)	111.7 GB	87.1 GB
<input type="checkbox"/>	Local Disk (Z:)	465.7 GB	114.1 GB
<input type="checkbox"/>		0 B	0 B

Z: FOR TEMP LOCATION

6. Set Backup Schedule

- Add a schedule (e.g., daily, weekly), or
- Leave the default schedule settings.



7. Choose Backup Destination

Select Cloud or Local:

- If Cloud, choose: UK Storage.

- If Local, select a directory on your local system.

New Storage Destination / Destination Pool

Name
UK Storage

Destination storage
UK Storage (immutable: No)
UK Storage (immutable: No)
Local / Mapped Drive / Removable Drive

OK Cancel Help

8. Set Encryption

Use User password (login password) as the default encryption key, or set a custom password for added security.

Encrypt Backup Data

On

Encryption Type

User password
Default
User password
Custom

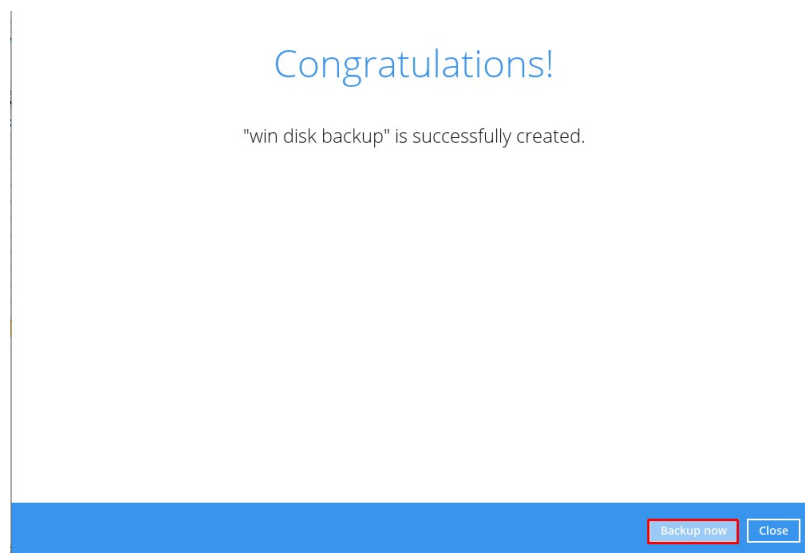
User password

9. Finish Setup

You'll see: 'Congratulations! Backup set created successfully.'

*Below the success message, click '**Backup Now**' if you want to start the backup immediately.*

If not, the backup will run at the scheduled time.

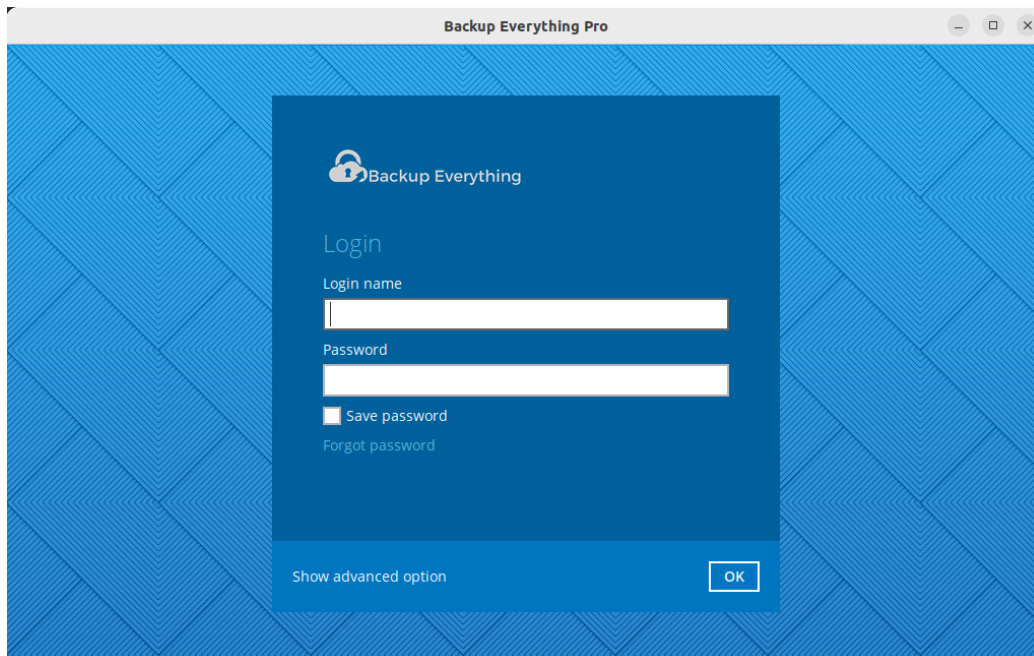


MS Windows System Restore Guide

*This guide provides clear, step-by-step instructions for restoring a **Windows system backup**.
Use this process to recover a full system from a previous backup.*

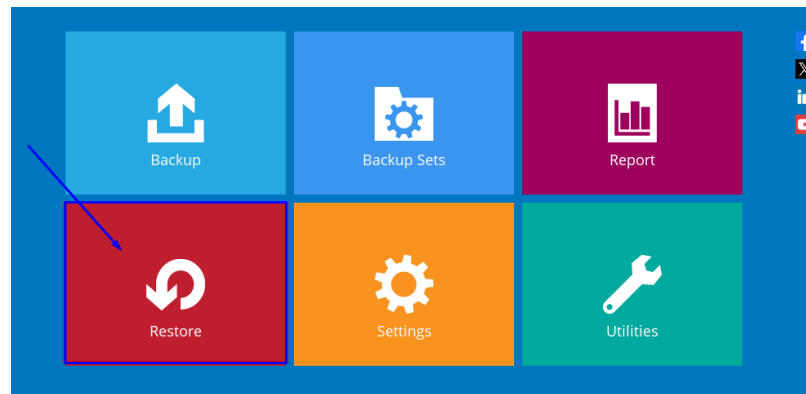
1. Launch the Program & Login

Enter your login credentials to access the main dashboard.



2. Go to the Restore Menu

- click on **“Restore.”**

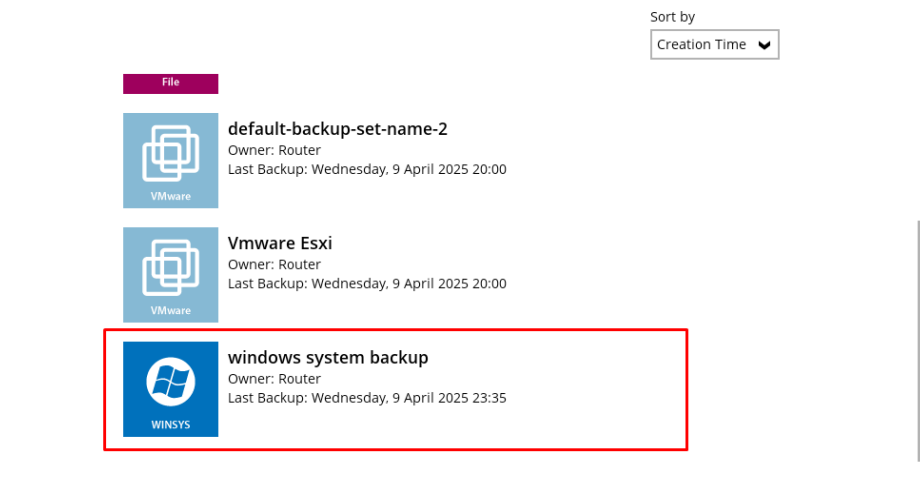


- This section lists all previously created backup sets available for restoration.

3. Select the Backup Set


- Choose the **backup set** that contains the system backup or data you wish to restore.


Please Select The Backup Set To Restore



4. Choose the Backup Destination Source

- *Select whether the backup data is stored in:*
 - **Cloud** (e.g., UK Storage), or
 - **Local**

 windows system backup

 UK Storage
Immutable: No

Temporary directory for storing restore files

C:\Users\cypter\temp Browse

[Hide advanced option](#)



5. Select the Files to Restore

- *For **MS Windows System Restore**, the system Image or related files will be listed.*

Select what to restore

Choose from files as of job ▼ 09/04/2025 ▼ Latest ▼

[Show filter](#)

Folders	Name	Size	Creation Time
 UK Storage	<input checked="" type="checkbox"/> Microsoft_Windows_System_Bac...	47.84 MB	09/04/2025 23:37
 Router			

[Search](#) Items per page 50 ▼ Page 1 / 1 ▼

6. Choose Restore Location

- *Define where it should be restored:*
 - Select the **target drive or partition** (e.g., C:\, D:\, etc.).
 - Make sure the drive has **sufficient space**

Choose Where The Files To Be Restored

Restore files to


Local Disk (C:)


Show advanced option

Previous Restore Cancel Help

7. Begin the Restore

- After reviewing your selections, click **“Restore”**.
- The restoration process will begin. A progress bar will indicate the status.

 windows system backup

 UK Storage (Immutable: No)
✓ Restore Completed Successfully
Estimated time left 0 sec
Restored 47.84 MB (1 file)
Elapsed time 50 sec
Transfer rate 11.46Mbit/s

